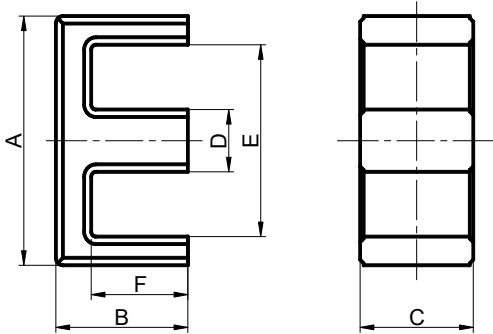
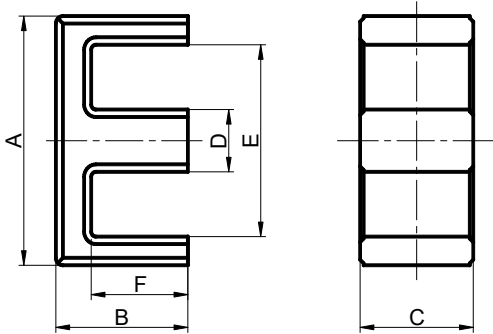


EE型功率铁氧体产品系列

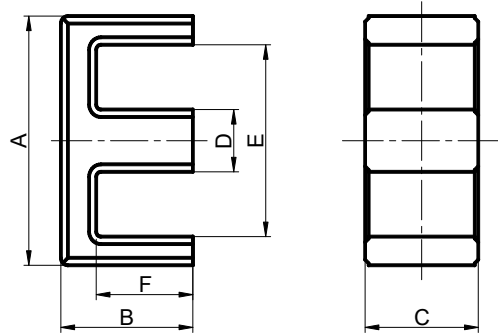


规格 Type	尺寸Dimenssions(mm)						有效参数Effective Parameters			电感系数AL(nH/N ²)		重量(克/付)Wt(g/set)	
	A	B	C	D	E	F	Ae(mm ²)	Le(mm)	Ve(mm ³)	BP44	BP95	BP44	BP95
EE9.1/4/2	9.1±0.40	4.1±0.15	1.9±0.20	1.9±0.20	5.3 min	2.26±0.15	3.61	22.46	81.08	800±25%	1000±25%	0.62	0.70
EE10/6/5	10.2±0.30	5.5±0.15	4.8±0.20	2.5±0.20	7.8 min	4.3±0.15	10.90	26.20	285.58	800±25%	950±25%	1.42	1.74
EE11/7/3	11.2±0.30	6.85±0.15	2.7±0.20	2.45±0.2	8.5±0.3	5.5±0.15	7	32.17	225.2	420±25%	580±25%	1.10	1.60
EE12/6/5	12.00±0.35	6.00±0.20	5.00±0.20	2.5±0.20	9.0 min	4.40±0.20	13.30	29.00	385.70	900±25%	1100±25%	2.00	2.40
EE12.4/6/7	12.40±0.40	5.60±0.20	6.90±0.20	2.7±0.20	9.2 min	4.20±0.20	19.10	28.00	534.80	1300±25%	1500±25%	2.65	3.30
EF12.9/6/3.4	13.00±0.30	6.50±0.20	3.40±0.20	3.4±0.20	9.7 min	5.00±0.20	12.34	30.84	280.60	750±25%	950±25%	1.80	2.05
EF12.6/7/4	12.70±0.40	6.90±0.20	3.70±0.20	3.7±0.20	8.8 min	4.90±0.20	13.60	31.00	421.60	800±25%	1000±25%	2.00	2.34
EF12.6/7/4A	12.70±0.40	6.80±0.20	3.60±0.20	3.6±0.20	9.2 min	5.00±0.20	12.78	32.00	409.10	850±25%	1000±25%	2.00	2.38
EF13.5/6/4	13.50±0.30	6.25±0.20	3.50±0.20	3.5±0.20	9.8 min	4.50±0.20	12.14	30.05	364.50	800±25%	1000±25%	1.90	2.40
EF13.5/6/7.2	13.50±0.30	7.20±0.20	7.20±0.20	3.5±0.20	9.8 min	5.20±0.20	25.50	33.20	846.60	1600±25%	2000±25%	4.35	5.00
EF13.6/5/12-1	13.60±0.30	5.40±0.20	11.95±0.20	3.0±0.20	10.0 min	3.90±0.20	36.70	27.30	1001.91	2000±25%	3000±25%	5.30	6.15
EF14/7/4	13.70±0.30	6.80±0.20	3.50±0.20	3.5±0.20	10.10 min	4.80±0.20	12.40	31.80	394.32	800±25%	1000±25%	2.10	2.35
EE13/6/6D	13.1±0.30	6.25±0.20	6.1±0.20	2.7±0.20	10.0 min	4.85±0.20	16.90	31.40	530.66	1100±25%	1300±25%	2.60	3.37
EE13/6/9.8D	13.1±0.30	6.25±0.20	9.8±0.20	2.7±0.20	10.0 min	4.85±0.20	26.75	31.40	839.95	1700±25%	2050±25%	4.10	5.50
EE13/7/6B	13.1±0.30	6.80±0.20	6.1±0.20	2.7±0.20	10.0 min	5.40±0.20	16.60	33.80	561.08	1100±25%	1300±25%	2.80	3.58
EE13.4/6/6	13.4±0.35	6.2±0.20	6.25±0.15	2.8±0.15	10.3 min	4.7±0.20	17.50	31.10	549.20	1100±25%	1300±25%	2.50	3.40
EE13.5/6/6	13.5±0.30	6.25±0.20	6.1±0.20	2.7±0.20	10.4 min	4.90±0.20	16.50	31.90	526.35	1100±25%	1300±25%	2.70	3.20
EE13.5/7/6	13.5±0.30	6.50±0.20	6.1±0.20	2.7±0.20	10.4 min	5.10±0.20	16.50	32.70	539.55	1100±25%	1300±25%	2.80	3.25
EE13.5/7/10	13.5±0.30	6.50±0.20	9.8±0.20	2.7±0.20	10.4 min	5.10±0.20	27.30	32.90	898.17	1800±25%	2100±25%	4.50	5.30
EE14/5/6H	14.0±0.30	4.90±0.15	6.00±0.20	2.90±0.20	10.7 min	3.40 ^{+0.15} _{-0.10}	17.80	26.40	469.92	1200±25%	1400±25%	2.40	3.40
EE14/5/6A	14.0±0.30	5.40±0.15	6.00±0.20	2.90±0.20	10.7 min	3.90 ^{+0.15} _{-0.10}	17.80	28.40	505.52	1000±25%	1400±25%	2.50	3.40
EE14/6/6A	14.0±0.30	6.20±0.15	6.00±0.20	2.90±0.20	10.7 min	4.70 ^{+0.15} _{-0.10}	17.80	31.56	561.77	1000±25%	1250±25%	3.20	3.90
EE14/4/8C	14.0±0.30	4.20±0.15	7.90±0.20	3.50±0.20	10.2 min	3.10 ^{+0.15} _{-0.10}	21.77	22.86	497.80	2000±25%	2800±25%	2.80	4.00
EE15/7.5/12	15.0±0.40	7.50±0.20	12.0±0.30	3.50±0.20	11.8±0.4	5.80±0.20	40.27	36.75	1479.92	2500±25%	3200±25%	7.80	9.20
EE16/8/5B	16.0±0.30	7.8±0.20	4.9 ^{+0.15} _{-0.05}	4.2±0.20	11.7 min	5.8±0.20	20.20	37.30	753.46	1100±25%	1400±25%	3.50	4.46
EE16/7/5D	16.2±0.40	7.4±0.20	4.8±0.20	4.0±0.20	11.8 min	5.40±0.20	19.20	36.00	691.20	1100±25%	1300±25%	3.30	3.90
EE16/7/7D	16.2±0.40	7.4±0.20	6.8±0.20	4.0±0.20	11.8 min	5.40±0.20	27.40	36.20	991.88	1600±25%	2000±25%	5.00	5.85
EE16/7/8D	16.2±0.40	7.4±0.20	8.0±0.20	4.0±0.20	11.8 min	5.40±0.20	32.00	36.10	1155.20	1800±25%	2200±25%	5.80	6.70
EE16/7/10D	16.2±0.40	7.4±0.20	9.8±0.20	4.0±0.20	11.8 min	5.40±0.20	40.00	36.08	1443.20	2000±25%	2600±25%	7.00	9.00
EE16.2/6/8.9A	16.2±0.40	5.55±0.2	8.9±0.20	4.2±0.20	12.50 min	3.55±0.20	36.00	27.90	1004.40	3120±25%	4350±25%	5.15	6.00
EE16.4/7/8	16.55max	6.9±0.20	8.0±0.20	4.0±0.20	12.3 min	4.90±0.20	31.60	34.30	1083.88	1900±25%	2400±25%	5.20	6.38
EE16/7/6.8C	16.0±0.30	7.2±0.20	6.8±0.20	3.2±0.20	12.50 min	5.50±0.15	22.20	36.76	816.07	1000±25%	1200±25%	3.95	4.60
EE16/7/5-2	16.0±0.3	7.2±0.15	4.8±0.20	4.0±0.20	12.0±0.3	5.20±0.20	18.50	35.50	656.75	1100±25%	1300±25%	3.40	4.00
EE16/13/8-2	16.0±0.3	6.5±0.15	8.0±0.20	4.0±0.20	12.0±0.3	4.50±0.20	32.00	32.30	1034.00	2050±25%	2650±25%	5.50	6.70
EE16.6/6/8	16.7±0.30	5.9±0.15	7.8±0.20	4.0±0.15	12.9±0.30	4.00±0.15	30.08	30.50	917.44	1800±25%	2200±25%	4.70	5.50
EEL16/12/5	16.0±0.40	12.4±0.2	4.8±0.20	4.0±0.20	11.7 min	10.20±0.20	19.10	55.40	1058.14	850±25%	1050±25%	5.30	6.56
EEL16/12/1.8-1	16.0±0.50	12.0±0.3	1.8±0.20	7.0±0.20	12.4 min	10.40±0.30	6.61	48.06	317.70	800±25%	1000±25%	2.20	2.80
EE17/12/5	17.2±0.30	12.5±0.2	4.85±0.20	4.0±0.20	12.8 min	10.30±0.20	19.90	56.90	1132.31	800±25%	1100±25%	5.50	6.90
EE17/7/5	16.7±0.40	7.4±0.2	4.8±0.20	4.0±0.20	12.5 min	5.40±0.20	19.20	37.33	716.74	1100±25%	1300±25%	3.30	3.80
EE17/8/5	16.8±0.40	7.8±0.2	4.8±0.20	4.0±0.20	12.5 min	5.80±0.20	19.03	38.34	729.61	1000±25%	1250±25%	3.70	3.80
EE17/7/6.8	16.7±0.40	7.4±0.2	6.8±0.20	4.0±0.20	12.5 min	5.40±0.20	27.10	37.30	1010.83	1500±25%	1800±25%	5.00	5.40
EE17/7/9.8	16.7±0.40	7.4±0.2	9.8±0.20	4.0±0.20	12.5 min	5.40±0.20	38.80	36.64	1421.63	2200±25%	2800±25%	7.40	8.00
EE17/8/12.5	16.7±0.40	7.8±0.2	12.5±0.20	4.0±0.20	12.5 min	5.80±0.20	49.50	38.35	1898.33	2800±25%	3200±25%	9.30	10.70
EE17/10/9.7													
EE17.2/8/9.8	17.20±0.40	7.8±0.20	9.8±0.20	4.0±0.20	12.70 min	5.8±0.20	39.50	38.65	1526.68	2200±25%	2800±25%	7.90	8.50
EE17.2/8/12.6	17.20±0.40	7.8±0.20	12.6±0.20	4.0±0.20	12.70 min	5.8±0.20	50.80	38.65	1963.42	2900±25%	3300±25%	9.80	11.12
EE17.4/7/6.8	17.40±0.40	7.5±0.20	6.8±0.20	4.0±0.20	13.10 min	5.5±0.20	26.70	39.00	1041.30	1500±25%	1700±25%	5.00	5.54
EE17.4/7/7.3	17.40±0.40	7.5±0.20	7.3±0.20	4.0±0.20	13.10 min	5.5±0.20	28.80	37.80	1088.64	1600±25%	1800±25%	5.30	5.92
EE17.4/8/9.8	17.40±0.40	7.9±0.20	9.8±0.20	4.0±0.20	13.10 min	5.9±0.20	38.70	39.30	1520.91	2000±25%	2600±25%	7.20	8.10
EE17.4/8/12.6	17.40±0.40	7.8±0.20	12.6±0.20	4.0±0.20	13.10 min	5.8±0.20	49.96	38.94	1945.5	3200±25%	3800±25%	9.75	10.80
EE17.5/6/7.5	17.5±0.40	6.4±0.15	7.5±0.20	5.20±0.20	12.2 min	4.0±0.15	38.23	30.70	1173.66	2000±25%	3000±25%	6.00	6.80
EE18.4/6/7.4	18.4±0.40	6.2±0.20	7.4±0.20	5.50±0.20	12.7 min	3.7±0.15	39.50	30.40	1200.80	2000±25%	2900±25%	6.20	7.05
EF16/6/5	16.1±0.30	6.1±0.20	4.5±0.20	4.5±0.20	11.7 min	4.0±0.20	19.30	30.20	582.86	1100±25%	1600±25%	2.80	3.20

EE型功率铁氧体产品系列



规格 Type	尺寸Dimenssions(mm)						有效参数Effective Parameters			电感系数AL(nH/N ²)		重量(克/付)Wt(g/set)	
	A	B	C	D	E	F	Ae(mm ²)	Le(mm)	Ve(mm ³)	BP44	BP95	BP44	BP95
EF16/6/7	16.1±0.30	5.75±0.15	7.15±0.20	4.5±0.20	11.7 min	3.7±0.15	31.30	27.88	872.64	2300±25%	2500±25%	4.60	5.16
EF16.5/8/5	16.5±0.40	8.2±0.20	4.5±0.20	4.55±0.20	11.7 min	5.9±0.20	19.90	38.20	760.18	1200±25%	1450±25%	3.72	4.06
EF16.5/6/8	16.5±0.40	6.1±0.20	8.0±0.20	4.55±0.20	11.7 min	4.0±0.20	34.50	30.40	1048.80	2100±25%	3000±25%	5.35	7.30
EF16.6/6/8	16.6±0.40	6.0±0.20	8.0±0.20	4.55±0.20	12.0 min	4.0±0.20	33.30	30.45	1013.99	2200±25%	3000±25%	5.30	5.86
EF17.5/8/8.4	17.5±0.40	7.5±0.20	8.4±0.20	4.55±0.20	12.4 min	5.5±0.20	36.70	36.90	1354.23	2300±25%	3200±25%	7.00	8.35
EE18.8/8/9.2	18.8±0.40	7.8±0.20	9.2±0.20	5.10±0.20	12.8 min	5.0±0.20	36.70	36.90	1354.23	2300±25%	3200±25%	7.00	8.35
EE19/8/5	19.2±0.40	8.1±0.20	4.85±0.20	4.60±0.20	14.1 min	5.8±0.20	22.10	40.20	888.42	1200±25%	1300±25%	4.50	5.10
EE19/8/10	19.2±0.40	8.1±0.20	9.6±0.20	4.60±0.20	14.1 min	5.8±0.20	45.40	40.00	1816.00	2000±25%	3000±25%	8.90	10.60
EE19/8/5D	19.5±0.40	8.3±0.20	5.0±0.20	4.85±0.20	14.0 min	5.8±0.20	25.00	40.50	1012.50	1300±25%	1500±25%	4.60	5.65
EE19/8/5E	19.1±0.30	8.1±0.20	4.85±0.20	4.85±0.20	14.2 min	5.8±0.20	23.30	39.20	913.00	1300±25%	1500±25%	4.50	5.60
EEL19/14/5	20.2±0.40	13.8±0.30	5.0±0.25	5.0±0.25	14.8 min	11.3±0.3	24.10	63.00	1518.30	1000±25%	1200±25%	7.50	9.20
EE19.8/8/4.8	19.8±0.40	8.3±0.30	4.8±0.25	4.85±0.25	15.2 min	5.9±0.30	22.01	41.51	913.49	1200±25%	1500±25%	4.60	5.40
EE19.9/8/10.1	19.9±0.40	8.30±0.20	10.1±0.20	5.05±0.20	14.5 min	5.7±0.20	51.30	40.70	2087.91	3000±25%	3800±25%	10.60	12.20
EE19.9/8/12.1	19.9±0.40	8.30±0.20	12.1±0.20	5.05±0.20	14.5 min	5.7±0.20	61.50	40.70	2503.05	3700±25%	4600±25%	12.70	14.60
EE20/8/5	20.2±0.40	8.10±0.20	4.8±0.20	4.8±0.20	15.0 min	5.8±0.20	22.98	41.02	942.64	1150±25%	1500±25%	4.60	5.54
EE20.5/10.7/7	20.5±0.70	10.95±0.20	7.0±0.20	5.0±0.20	14.0 min	7.35±0.2	38.80	48.50	1881.80	1800±25%	2400±25%	10.00	11.10
EF20/10/6	20.0±0.40	10.1±0.20	5.7±0.20	5.7±0.20	14.1 min	7.2±0.20	32.20	46.50	1497.30	1500±25%	2000±25%	7.60	8.40
EF20/10/9	20.0±0.40	9.9±0.20	8.8±0.20	5.7±0.20	14.1 min	7.2±0.20	50.10	46.00	2304.60	2500±25%	3200±25%	11.60	13.00
EF20/10/11	20.0±0.40	9.9±0.20	10.75±0.25	5.7±0.20	14.1 min	7.2±0.20	61.50	46.00	2829.00	3000±25%	3800±25%	13.90	15.70
EF20/10.5/6F	20.4±0.40	10.5±0.20	5.70±0.20	5.7±0.20	14.6 min	7.8±0.20	31.67	49.12	1515.70	1450±25%	1950±25%	7.80	8.55
EF20/10.75/10.6B	20.0±0.40	10.75±0.20	10.60±0.25	5.7±0.20	14.1 min	7.6±0.20	61.10	48.40	2957.24	2800±25%	3600±25%	15.00	16.80
EF20/10/18	20.0±0.40	10.4±0.20	17.60±0.30	5.7±0.20	14.1 min	7.6±0.20	98.50	48.00	4728.00	4800±25%	5400±25%	23.60	26.00
EF20/10/6E	20.1±0.40	10.0±0.20	5.70±0.20	5.7±0.20	14.7 min	7.4±0.20	30.10	47.15	1419.22	1500±25%	2000±25%	7.45	8.26
EF20/10/11E	20.1±0.40	10.0±0.20	11.0±0.20	5.7±0.20	14.3 min	7.3±0.20	60.00	46.80	2808.00	3000±25%	3700±25%	13.95	15.60
EF20/07/16	20.15±0.40	7.40±0.20	16.0±0.25	5.7±0.20	14.4 min	4.5±0.20	91.20	36.20	3302.20	4700±25%	6000±25%	16.65	19.60
EF20.4/7.75/15.8	20.4±0.40	7.75±0.20	15.8±0.25	5.7±0.20	14.5 min	4.7±0.20	91.10	37.10	3379.81	4000±25%	6600±25%	17.80	20.40
EF21/10/6	21.0±0.40	10.25±0.20	5.7±0.20	5.7±0.20	15.1 min	7.5±0.20	31.20	48.20	1503.84	1400±25%	2000±25%	7.50	8.26
EF21/9/11	21.0±0.50	9.00±0.20	10.75±0.25	5.7±0.20	15.1 min	6.2±0.20	57.40	43.50	2496.90	3200±25%	4200±25%	13.00	14.20
EE22/10/6C	22.0±0.40	9.4±0.25	5.75±0.20	5.75±0.20	16±0.4	5.6±0.25	36.30	42.80	1553.64	1800±25%	2400±25%	8.50	9.14
EE22/10/8.7	22.3±0.40	9.5±0.25	8.70±0.20	5.75±0.20	15.9 min	5.6±0.25	54.60	43.15	2355.99	2800±25%	3600±25%	12.70	13.90
EE22/10/6B	22.3±0.40	9.4±0.25	5.75±0.20	5.70±0.20	16.2 min	5.6±0.25	35.50	43.10	1530.05	1800±25%	2400±25%	8.50	9.14
EE22/10/8.7B	22.3±0.40	9.5±0.25	8.70±0.20	5.70±0.20	16.2 min	5.6±0.25	54.30	43.20	2345.76	2200±25%	3600±25%	12.80	14.10
EE22/9/11	22.0±0.40	8.85±0.20	10.9±0.20	6.40±0.20	16.0 min	6.0±0.20	63.90	43.10	2754.09	3000±25%	3800±25%	14.10	15.60
EE22/13/8D	22.0±0.40	12.8±0.20	8.00±0.20	5.50±0.20	16.6 min	9.80±0.2	43.20	59.30	2561.76	2000±25%	2500±25%	13.20	14.26
EEL22/13/6-1	22.0±0.40	12.60±0.20	5.75±0.20	5.75±0.20	15.6 min	9.0±0.20	35.83	56.25	2015.44	1600±25%	2000±25%	10.30	12.50
EEL22/15/6	22.2±0.40	15.35±0.20	5.75±0.20	5.75±0.20	15.9 min	11.35±0.2	34.30	66.00	2263.80	1200±25%	1500±25%	12.00	14.50
EE23/9/8.7E	22.9±0.40	9.0±0.20	8.70±0.20	5.70±0.20	17.5 min	5.6±0.20	49.95	43.70	2182.82	2600±25%	3800±25%	11.50	13.10
EE23/10/6	22.9±0.40	9.6±0.20	6.00±0.20	6.10±0.20	15.7 min	5.8±0.20	39.50	44.00	1738.00	1900±25%	2300±25%	9.10	9.90
EE23/9.6/5.75F	23.0±0.40	9.6±0.20	5.75±0.20	5.80±0.20	16.8 min	5.9±0.20	35.97	44.95	1616.85	±25%	±25%	8.60	9.50
EE23.3/9.4/10	23.3±0.40	9.4±0.20	5.75±0.20	5.75±0.20	17.0 min	6.0±0.20	35.23	45.37	1598.39	1900±25%	2300±25%	8.20	9.30
EE23.5/10.5/11	23.5±0.40	10.50±0.20	11.00±0.20	6.70±0.20	16.3 min	7.1±0.2	73.65	49.16	3620.63	3500±25%	4200±25%	18.50	20.70
EE23.5/12/11	23.5±0.40	12.00±0.20	11.00±0.20	7.80±0.20	16.3 min	7.1±0.2	84.83	49.90	4233.50	3500±25%	4400±25%	23.30	25.40
EE24/9/8.2	24.0±0.40	9.30±0.20	8.20±0.20	7.20±0.20	17.6 min	5.7±0.2	55.20	44.15	2437.10	2600±25%	3500±25%	13.10	14.50
EE25/10/6	25.4±0.50	10.0±0.20	6.4±0.20	6.35±0.20	18.55 min	6.9±0.2	40.00	49.70	1988.00	1800±25%	2600±25%	10.10	11.50
EE25/10/6-1	25.4±0.4	9.95±0.15	6.35±0.20	6.35±0.20	19.0±0.4	6.75±0.15	40.40	48.00	1939.00	1800±25%	2600±25%	10.20	11.60
EEL25/16/6	25.6±0.40	16.1±0.25	6.35±0.30	6.35±0.30	19.0±0.5	13.1±0.25	39.90	74.70	2980.53	1350±25%	1800±25%	15.70	18.00
EF25/19/10	24.9±0.5	9.5±0.20	9.4±0.25	7.20±0.25	17.4 min	5.9±0.2	67.68	45.41	3073.35	3200±25%	4200±25%	15.90	17.60
EF25/13/7	25.05±0.75	12.55±0.25	7.20±0.30	7.25±0.25	17.5 min	8.95±0.25	51.90	57.90	3005.01	2000±25%	2700±25%	15.00	16.50
EF25/13/9	25.05±0.75	12.55±0.25	8.85±0.25	7.25±0.25	17.5 min	8.95±0.25	63.40	57.90	3670.86	2500±25%	3100±25%	18.40	20.20
EF25/13/11	25.05±0.75	12.55±0.25	10.75±0.25	7.25±0.25	17.50 min	8.95±0.25	76.00	58.60	4453.60	3000±25%	3800±25%	22.60	24.56
EF25/07/15	25.05±0.40	7.40±0.20	15.05±0.25	7.25±0.25	17.60 min	3.95±0.2	106.34	37.51	3988.81	6200±25%	8000±25%	20.50	23.50
EF25/19/9.4	24.9±0.5	9.5±0.20	9.4±0.25	7.20±0.25	17.40 min	5.9±0.20	67.68	45.41	3073.35	3200±25%	4200±25%	15.90	17.80
EF25.5/13/7	25.50±0.50	12.70±0.20	7.20±0.20	7.20±0.20	18.40 min	9.1±0.2	50.15	59.10	2963.87	2000±25%	2700±25%	15.00	16.40
EF26/7/11	26.2±0.4	7.00±0.15	10.75±0.30	7.25±0.20	19.0±0.30	3.6±0.15	75.25	37.43	2816.61	3000±25%	4000±25%	14.60	17.00



规格 Type	尺寸Dimenssions(mm)						有效参数Effective Parameters			电感系数AL(nH/N ²)		重量(克/付)Wt(g/set)	
	A	B	C	D	E	F	Ae(mm ²)	Le(mm)	Ve(mm ³)	BP44	BP95	BP44	BP95
EF26/13/7	26.0±0.5	13.0±0.20	7.20±0.30	7.20±0.20	19.50 min	9.5±0.2	47.80	61.10	2920.58	1850±25%	2300±25%	15.00	16.70
EE28/10/11	28.0±0.6	10.75±0.25	10.50±0.20	7.20±0.30	18.60 min	6.65±0.25	83.10	51.30	4300.00	3600±25%	4400±25%	22.20	24.70
EE28.5/10/11	28.5±0.5	10.40±0.25	10.70±0.20	7.25±0.30	20.00 min	6.40±0.25	81.00	51.50	4171.50	3800±25%	4600±25%	21.20	22.10
EE30/15/7A	30.0±0.5	15.0±0.20	7.05±0.20	6.95±0.20	19.50 min	10±0.25	59.20	65.70	3889.44	2400±25%	2900±25%	21.80	23.70
EE30/13/11	30.0±0.6	13.25±0.25	10.60±0.20	10.60±0.20	19.80 min	8.6±0.25	104.00	59.30	6167.20	3500±25%	4300±25%	31.40	34.40
EE30/12/6.7-1	30.0±0.5	11.5±0.15	6.70±0.20	6.70±0.20	21.0±0.50	6.75±0.15	54.60	53.80	2937.48	2300±25%	2900±25%	16.20	17.60
EE31/13/9	30.9±0.60	13.4±0.20	9.4±0.30	9.4±0.30	21.9 min	8.9±0.3	84.40	62.60	5280.00	2950±25%	3600±25%	26.70	29.80
EE33/15/13	33.0±0.80	14.8±0.20	12.7±0.30	9.8±0.30	23.7 min	10±0.2	115.10	69.20	7965.40	3700±25%	4500±25%	40.40	43.80
EE35/14.4/9.5	34.9±0.70	14.45±0.2	9.50±0.30	9.4±0.30	25.40 min	9.8±0.2	87.30	70.30	6137.19	3800±25%	3500±25%	30.80	33.60
EE40/17/12	40.0±0.60	17.10±0.2	12.0±0.30	11.70±0.30	27.50 min	10.3±0.2	146.10	77.45	11315.45	4200±25%	6000±25%	58.50	62.80
EE41/16/13	41.3±0.50	15.8±0.25	12.7±0.25	12.7±0.25	28.0 min	9.55±0.25	161.20	73.90	11912.68	5500±25%	6700±25%	62.00	66.70
EE42/21/15	42.0±0.50	21.2±0.25	15.0±0.30	12.0±0.30	29.5 min	15.4±0.25	177.00	98.30	17399.10	4000±25%	6000±25%	86.80	94.50
EE42/21/20	42.0±0.50	21.2±0.25	20.0±0.30	12.0±0.30	29.5 min	15.4±0.25	236.20	98.30	23218.46	6300±25%	7700±25%	118.50	129.00
EE42/7/16.5B	42.0±0.60	6.80±0.20	16.5±0.30	4.8±0.20	37.00 min	4.5±0.2	77.10	57.80	4456.38	2800±25%	3500±25%	23.00	29.50
EE42/7/24A	42.0±0.60	6.80±0.20	24.0±0.30	6.0±0.20	35.40 min	3.8±0.2	144.00	54.60	7862.40	6200±25%	8000±25%	39.00	48.80
EE42.5/22/20	42.5±0.50	21.5±0.25	20.0±0.40	12.0±0.30	30.0 min	15.45±0.25	240.50	99.30	23881.65	6300±25%	7700±25%	120.20	130.70
EE42.5/22/25	42.5±0.50	21.5±0.25	24.8±0.40	12.0±0.30	30.0 min	15.45±0.25	298.60	99.30	29650.98	7200±25%	9000±25%	149.00	162.00
EE50/6/16.5	50.0±0.60	6.45±0.15	16.50±0.30	5.60±0.2	43.4 min	3.7±0.15	92.50	62.25	5758.13	3500±25%	4400±25%	28.30	37.55
EE50/8/20.3D	50.0±0.50	7.70±0.15	20.30±0.30	6.50±0.2	43.0 min	4.8±0.15	122.30	65.70	8035.11	3800±25%	4800±25%	39.50	51.00
EE50/27/15	50.0±0.70	27.2±0.20	14.60±0.30	14.60±0.3	34.1 min	18.6±0.2	225.20	119.50	26911.40	5000±25%	6000±25%	138.00	147.30
EE51.3/14.4/23.8	51.3±0.80	14.4±0.20	23.8±0.40	15.0±0.3	36.9±0.8	7.2±0.2	346.40	73.50	25460.40	12000±25%	14800±25%	132.80	146.00
EE55/28/21	55.0±1.00	27.5±0.30	20.75±0.30	16.95±0.35	37.5 min	18.9±0.4	349.00	124.00	43200.00	6000±25%	8400±25%	218.00	236.60
EE55/28/25	55.0±1.00	27.5±0.30	24.7±0.30	16.95±0.35	37.5 min	18.9±0.4	420.00	124.00	52100.00	7000±25%	9500±25%	258.00	280.40
EE60/4.5/50	60.3±0.70	4.50±0.15	50.0±0.50	10.0±0.30	52.3±0.7	2±0.15	270.60	59.50	16100.70	-	1400±25%	92.00	114.00
EE60/5.7/50	60.3±0.70	5.70±0.15	50.0±0.50	10.0±0.30	52.3±0.7	3±0.15	295.00	63.50	18732.50	-	1450±25%	104.00	126.80
EE65/33/27	65.1±1.40	32.5±0.30	26.9±0.50	19.65±0.35	44.2 min	22.6±0.4	535.00	147.00	78600.00	8000±25%	10080±25%	395.00	419.00
EE70/33/32	70.5±1.20	32.95±0.30	31.6±0.50	21.65±0.35	48.0 min	22.25±0.4	682.35	150.00	102352.5	10000±25%	13500±25%	512.00	565.00
EE85/45/27	85.0±2.0	44.50±0.50	26.5±0.50	26.50±0.5	56.0 min	30.5±0.5	717.30	196.50	140949.5	7800±25%	9800±25%	700.00	780.00
EE85/45/32	85.0±2.0	44.50±0.50	31.5±0.50	26.50±0.5	56.0 min	30.5±0.5	837.30	198.80	166455.2	10000±25%	13500±25%	850.00	925.00

注: AL值测试条件:1KHz、 0.3V、 100Ts 。(Remark:Testing conditon for AL:1KHz、 0.3V、 100Ts.)
以上为本公司标准规格, 可根据客户特殊要求进行设计。(The above is the usually type, we can redesign according to costomer's request)