

Fig.1

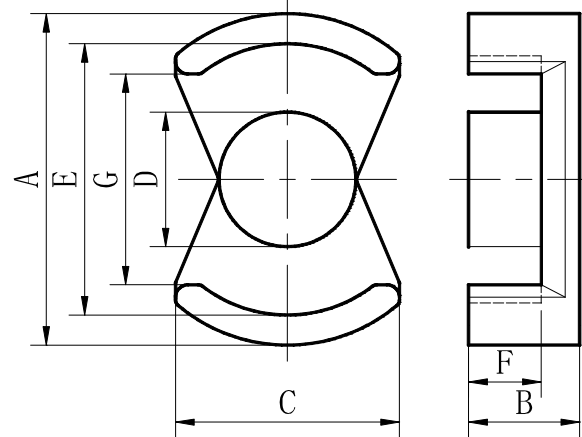


Fig.2

规格Type	图形Fig	尺寸Dimensions(mm)							有效参数Effective parameter			电感系数AL(nH/N <sup>2</sup> )		重量(克/付)
		A	B	C	D	E	F	G	Ae(mm <sup>2</sup> )	Le(mm)	Ve(mm <sup>3</sup> )	BP44	BP95	
PM22.5	2	22.5±0.4	9.10±0.15	15±0.3	9.4±0.2	18.3min	6±0.2	13min	73.2	42.1	3081.7	3600±25%	4500±25%	18.20
PM27/17	2	27±0.4	8.85±0.15	18±0.3	11±0.2	22+0.5/-0.3	5.85±0.2	17.1±0.4	95.6	43.0	4110.8	5600±25%	7000±25%	24.40
PM62/49	1	61±1	24.3±0.3	25.1±0.6	5.55±0.3	48.8min	17±0.3	29min	570	108.8	62000.0	9700±25%	14400±25%	357.0
PM74/59	1	72.5±1.5	29.5±0.3	29±1	5.40±0.3	57.5min	20.5±0.3	34min	790	128.0	101120.0	11000±25%	15500±25%	601.0
PM74/30	2	72.5±1.5	14.7±0.3	29±1	5.40±0.3	57.5min	5.7±0.3	34min	737	76.0	56012.0	14400±25%	18000±25%	344.4
PM74/30	3	72.5±1.5	14.7±0.3	29±1	5.40±0.3	57.5min	5.7±0.3	34min	737	76.0	56012.0	14400±25%	18000±25%	344.4
PM74/30	2+3	72.5±1.5	14.7±0.3	29±1	5.40±0.3	57.5min	5.7±0.3	34min	737	76.0	56012.0	14400±25%	18000±25%	344.4

注: AL值测试条件:1KHz、0.3V、100Ts。(Remark:Testing conditon for AL:1KHz、0.3V、100Ts.)

以上为本公司标准规格, 可根据客户特殊要求进行设计。(The above is the usually type, we can redesign according to costomer's request