

Fig.1

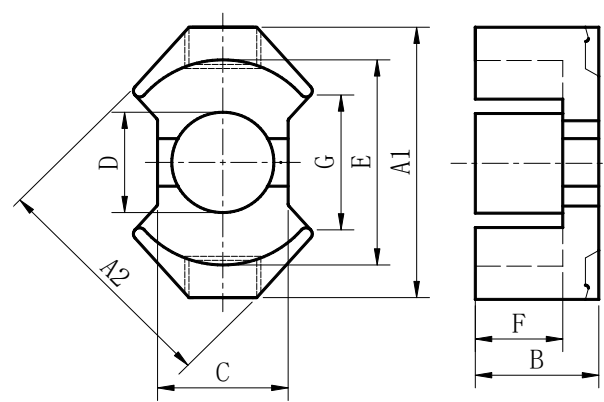


Fig.2

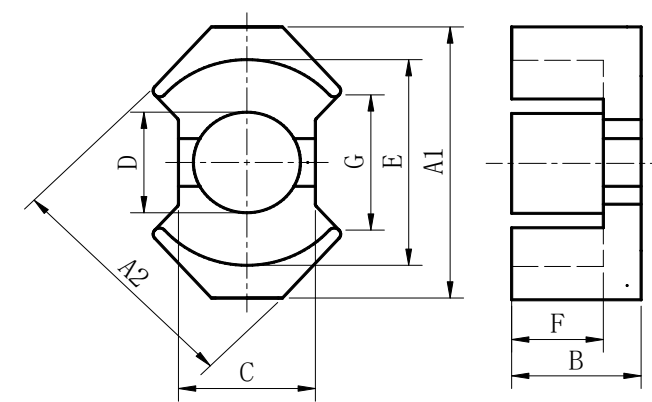


Fig.3

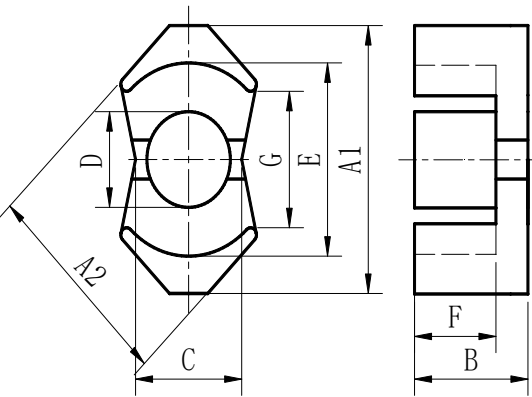


Fig.4

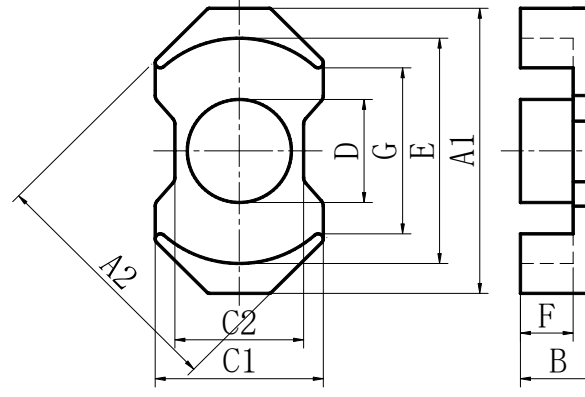


Fig.5

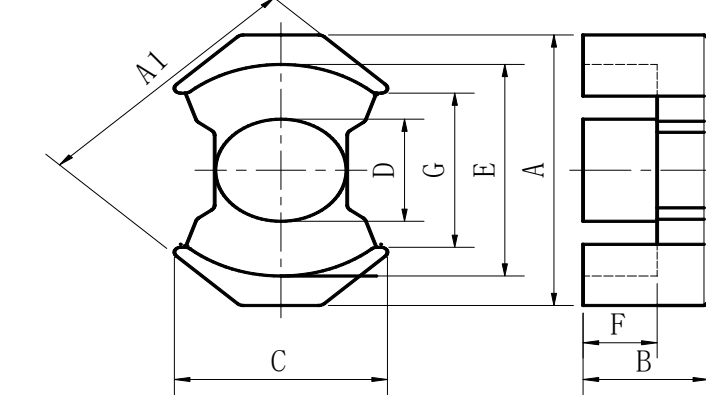


Fig.6

规格Type	图形Fig	尺寸Dimensions(mm)								有效参数Effective parameter				电感系数AL(nH/N ²)		重量(克/付) Wt(g/set)
		A1	A2	B	C	D	E	F	G	C1(mm ⁻¹)	Ae(mm ²)	Le(mm)	Ve(mm ³)	BP44	BP95	
RM6-1	4	18.50±0.35	15.50±0.35	6.30±0.15	8.2±0.15	6.25±0.15	13.20min	4.30±0.20	9.6 min	0.91	35.20	32.00	1127.60	2200±25%	2800±25%	7.40
RM6-2	4	17.80±0.30	14.60±0.35	6.30±0.15	8.1±0.15	6.30±0.15	12.70min	4.30±0.20	9.0 min	0.93	34.00	31.56	1073.04	2100±25%	2600±25%	7.60
RM6-3	4	18.50±0.35	15.50±0.35	6.30±0.15	8.2±0.15	6.25±0.15	13.20min	4.30±0.20	10.2 min	0.92	34.70	32.10	1113.87	2100±25%	2600±25%	7.20
RM7	1	19.90±0.40	16.85±0.35	6.70±0.15	7.05±0.15	7.05±0.15	15.10±0.30	4.45±0.15	11.2 min	0.94	36.74	34.88	1285.60	1900±25%	2800±25%	8.40
RM8C	2	22.75±0.45	19.30±0.40	8.60±0.15	10.80±0.25	8.3±0.15	17.30±0.30	5.80±0.15	9.80 min	0.68	60.80	41.70	2538.10	3400±25%	4200±25%	15.00
RM8C-12	2	22.75±0.45	19.30±0.40	6.20±0.15	10.80±0.25	8.3±0.15	17.30±0.30	3.60±0.15	9.80 min	0.56	60.80	34.15	2076.00	3800±25%	4600±25%	11.90
RM8-1	3	24.00±0.50	19.90±0.40	8.50±0.15	10.85±0.25	8.6±0.15	18.20±0.40	5.95±0.20	11.80 min	0.72	59.75	43.31	2587.90	3000±25%	3800±25%	15.30
RM8-2	2/3	22.75±0.50	19.50±0.40	8.70±0.20	10.80±0.30	8.4±0.20	17.30min	5.90±0.20	11.00 min	0.70	59.90	42.30	2533.77	3200±25%	4000±25%	15.10
RM8-3	6	22.25±0.50	19.45±0.30	8.05±0.15	13.66±0.20	8.4±0.15/-0.1	17.00min	4.75±0.2/-0.1	12.30min	0.69	56.80	39.00	2215.20	3200±25%	4000±25%	14.00
RM8-YJ	3	22.75±0.50	19.10±0.40	8.35±0.15	10.80±0.30	8.4±0.20	17.30±0.35	5.65±0.15	9.80 min	0.69	59.76	40.94	2446.70	3100±25%	4100±25%	14.20
RM9	3	25.6±0.60	22.00±0.50	9.30±0.15	12.90±0.30	10.3±0.20	20.10±0.45	6.30±0.20	13.5 min	0.68	76.60	52.00	3983.20	4500±25%	5000±25%	20.00
RM10-4	2	27.85±0.65	24.15±0.55	9.35±0.15	13.25±0.25	10.7±0.20	21.65±0.45	6.35±0.15	13.5 min	0.53	89.90	47.95	4310.00	4500±25%	5200±25%	23.70
RM10-1	3	28.00±0.50	25.30±0.50	9.30±0.20	13.25±0.20	10.7±0.20	22.50±0.50	6.60±0.20	14.5 min	0.57	85.60	49.20	4210.40	4500±25%	5000±25%	25.60
RM10-2	3	28.00±0.55	26.00±0.60	9.60±0.20	13.25±0.20	11.20±0.20	22.50min	6.70±0.20	14.5 min	0.55	90.50	50.00	4525.00	4500±25%	5500±25%	27.00
RM10-3	5	29.45±0.65	25.30±0.60	8.80±0.20	13.25±0.25	10.70±0.20	23.25±0.50	6.10±0.20	16.5 min	0.58	83.30	48.25	4019.23	4500±25%	5500±25%	24.00
RM10-5	3	28.80±0.5	24.80±0.50	9.20±0.15	13.40±0.30	10.60±0.20	22.00min	6.10±0.20	16.0 min	0.56	86.00	48.30	4153.80	4500±25%	5500±25%	23.60
RM12	2	36.90±0.7	29.20±0.60	12.25±0.2	15.90 ^{+0.2} _{-0.3}	12.6±0.20	25.50 ^{+0.5} _{-0.6}	8.55±0.20	13.4 min	0.41	140.00	56.90	7970.0	5200±25%	6200±25%	51.00
RM14	2	41.60±0.6	34.20±0.50	14.40±0.1	18.70±0.30	14.75±0.25	29.50±0.50	10.60±0.15	17.0 min	0.41	180.00	73.80	13283.0	6000±25%	7500±25%	73.50
RM14A	2	41.60±0.6	34.20±0.50	10.25±0.1	18.70±0.30	14.75±0.25	29.50±0.50	5.70±0.15	17.0 min	0.41	178.00	72.20	12851.0	8000±25%	9600±25%	59.50
RM14B	2	41.60±0.6	34.20±0.50	15.10±0.1	18.70±0.30	14.75±0.25	29.50±0.50	10.60±0.15	17.0 min	0.38	193.00	74.40	14354.7	6200±25%	7200±25%	77.90

注: AL值测试条件:1KHz、0.3V、100Ts。(Remark:Testing conditon for AL:1KHz、0.3V、100Ts.)

以上为本公司标准规格, 可根据客户特殊要求进行设计。(The above is the usually type, we can redesign according to customer's request.)