

EP型功率铁氧体产品系列

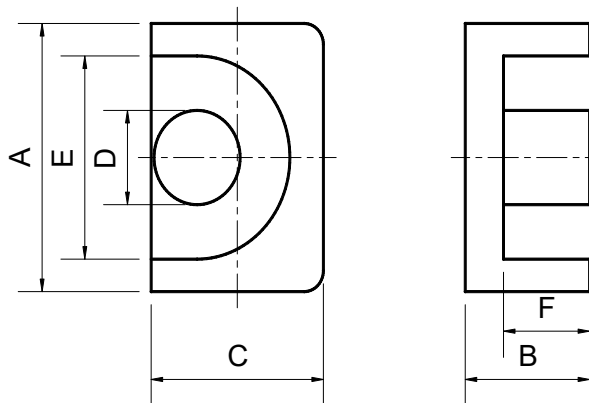


Fig.1

规格Type	图形Fig	尺寸Dimensions(mm)						有效参数Effective parameter			电感系数AL(nH/N ²)		重量(克/付)
		A	B	C	D	E	F	Ae(mm ²)	Le(mm)	Ve(mm ³)	BP40	BP95	Wt(g/set)
EP7	1	9.35±0.2	3.85±0.15	6.4±0.20	3.3±0.20	7.2min	2.75±0.15	10.30	15.70	162.00	1100±25%	1320±25%	2.00
EP13	1	12.7±0.3	6.65±0.20	8.8±0.20	4.35±0.20	9.8min	4.7±0.20	19.50	23.60	460.20	1500±25%	1850±25%	5.70
EP17	1	18.2±0.4	8.70±0.20	11.0±0.25	5.70±0.20	12.30min	5.85±0.20	34.00	28.00	953.30	2400±25%	3000±25%	14.20
EP20	1	24.0±0.5	11.0±0.20	15.0±0.40	8.8±0.30	16.10min	7.40±0.20	78.70	40.15	3159.81	4000±25%	5000±25%	33.10

注: AL值测试条件:1KHz、0.3V、100Ts。(Remark:Testing conditon for AL:1KHz、0.3V、100Ts.)

以上为本公司标准规格, 可根据客户特殊要求进行设计。(The above is the usually type, we can redesign according to costomer's request.)