

L型功率铁氧体产品系列

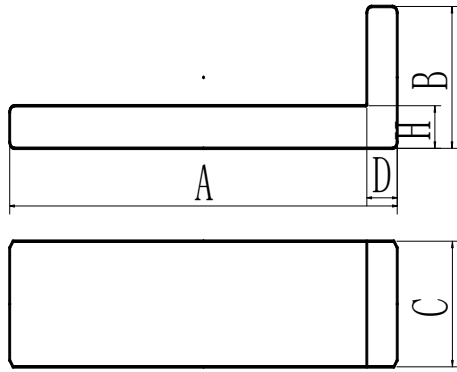


Fig.1

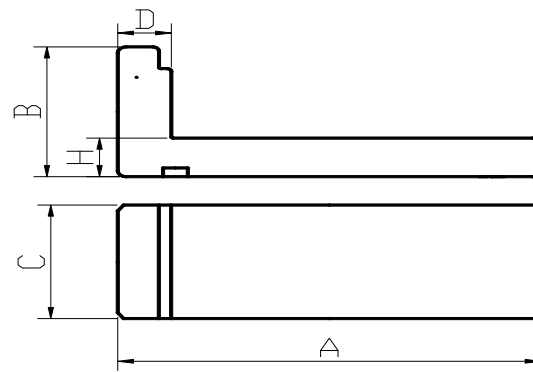


Fig.2

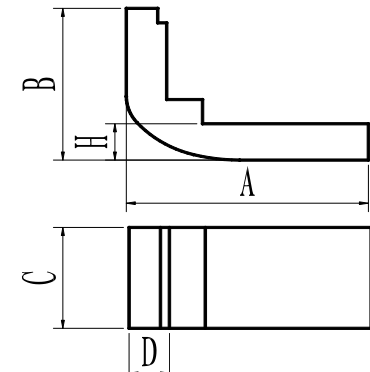


Fig.3

| 规格Type        | 图形Fig | 尺寸Dimensions(mm) |            |            |           |           | 抗压强度 (N)     | Q值     | 电感系数AL(nH/N <sup>2</sup> ) | 重量(克/只)   |
|---------------|-------|------------------|------------|------------|-----------|-----------|--------------|--------|----------------------------|-----------|
|               |       | A                | B          | C          | D         | H         | Strength (N) | Q      | BP40/BP95                  | Wt(g/set) |
| L19×14×13     | 1     | 19.0±0.50        | 14.00±0.20 | 13.00±0.20 | 4.50±0.20 | 4.50±0.10 | ≥160         | /      | /                          | 8.05      |
| L27×18.8×12.5 | 3     | 27.0±0.70        | 18.80±0.20 | 12.50±0.20 | 4.50±0.20 | 4.50±0.10 | ≥200         | ≥0.60  | > 320                      | 10.70     |
| L31.5×13.2×16 | 1     | 31.50±0.50       | 16.00±0.30 | 13.20±0.20 | 4.50±0.20 | 4.50±0.20 | ≥160         | ≥0.85  | > 350                      | 12.10     |
| L34.5×13.2×15 | 2     | 34.50±0.50       | 15.00±0.20 | 13.20±0.20 | 4.50±0.20 | 4.50±0.20 | ≥160         | ≥1.00  | ≥400                       | 12.60     |
| L38.5×13×15   | 1     | 38.20±0.50       | 15.00±0.20 | 13.00±0.20 | 4.50±0.20 | 5.00±0.20 | ≥200         | ≥1.00  | ≥430                       | 14.60     |
| L39×28×5      | 1     | 39.0±0.50        | 8.80±0.20  | 28.00±0.4  | 3.50±0.20 | 5.00±0.20 | ≥220         | /      | /                          | 28.00     |
| L40×14×13.0   | 1     | 40.0±0.50        | 14.00±0.20 | 13.00±0.20 | 4.50±0.20 | 4.50±0.10 | ≥160         | /      | /                          | 14.05     |
| L44.5×12×13.2 | 1     | 44.5±0.50        | 12.00±0.20 | 13.20±0.20 | 4.50±0.20 | 4.50±0.10 | ≥160         | /      | /                          | 15.00     |
| L54×12.5×19.3 | 2     | 54.00±0.70       | 19.30±0.20 | 12.50±0.20 | 4.5±0.20  | 5.00±0.20 | ≥200         | > 0.80 | > 580                      | 20.00     |
| L55.5×13.2×14 | 1     | 55.50±0.50       | 14.00±0.20 | 13.20±0.20 | 4.50±0.20 | 4.50±0.20 | ≥160         | ≥1.30  | 580-630                    | 18.80     |
| L64.5×15×15.4 | 1     | 64.5+0.2/-0.5    | 15.40±0.20 | 15.00±0.20 | 5.00±0.20 | 5.00±0.20 | ≥200         | ≥1.30  | 580-630                    | 27.15     |
|               |       |                  |            |            |           |           |              |        |                            |           |

注: 1. AL值测试条件:1KHz、0.3V、100Ts。(Remark:Testing conditon for AL:1KHz、0.3V、100Ts.)

2.Q值测试条件:1KHz、1V、100Ts。(Q:Testing conditon for AL:1KHz、1V、100Ts.)

3.抗压强度测试条件: 测试间距40mm, 测试速度: 30mm/mim.

以上为本公司标准规格, 可根据客户特殊要求进行设计。(The above is the usually type, we can redesign according to costomer's request.)